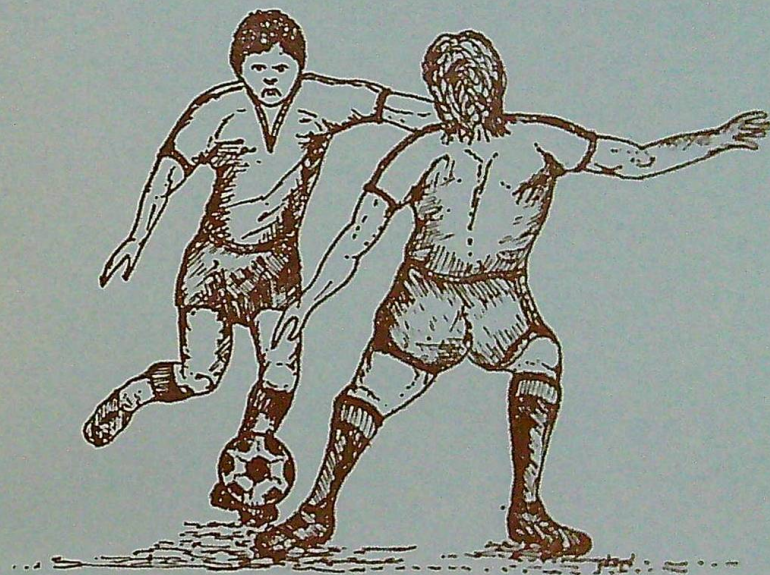


THE MATCH WINNING TACKLE



BALSHAW'S HIGH SCHOOL
LEYLAND



Valkenburg, Holland.

Sports Tour

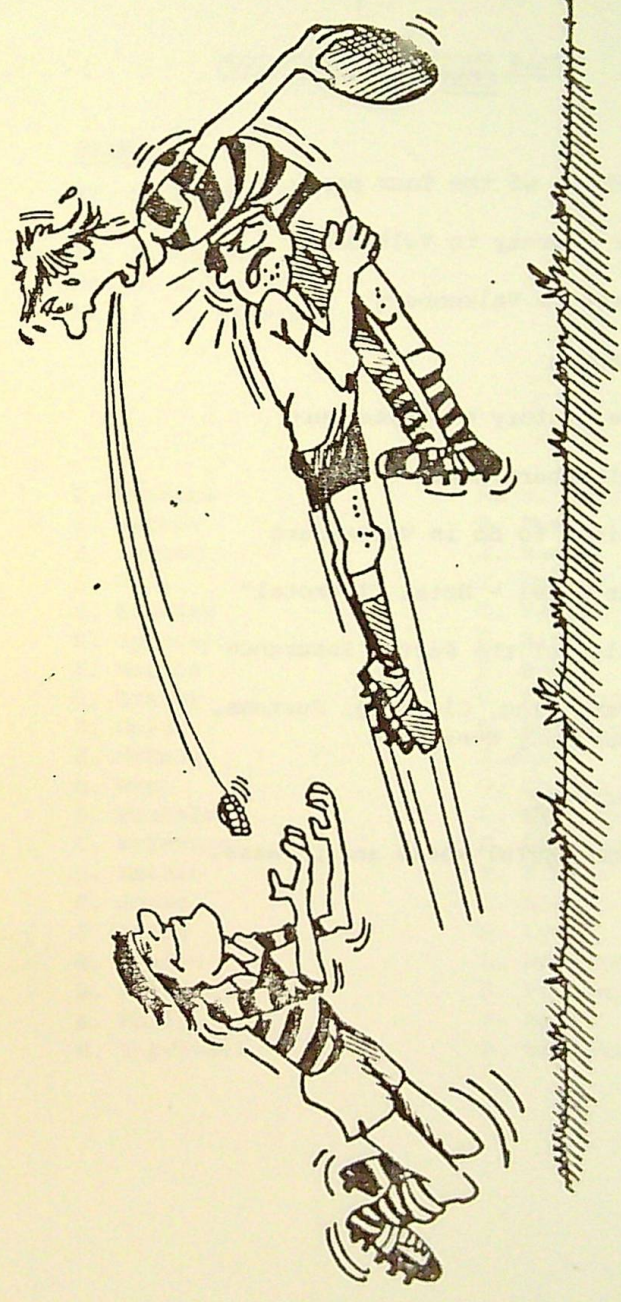
Easter,

1985

BALEKAWA'S BIRD
COUNTRY



Valerburg Holland
Sports Tour
Lester
1988



GOOD SUPPORT PLAY?

CONTENTS

Page:

| | |
|----|--|
| 1 | Members of the Tour party. |
| 2 | Our journey to Valkenburg |
| 3 | Where is Valkenburg |
| 4 | Limburg |
| 6 | The history of Valkenburg |
| 7 | Valkenburg today |
| 9 | Things to do in Valkenburg |
| 17 | Our Hotel - Hotel "Tourotel" |
| 21 | Rules of the Party, Insurance |
| 22 | Travelling, Clothing, Customs, Emergency contact. |
| 23 | Currency |
| 24 | Some useful words and phrases. |

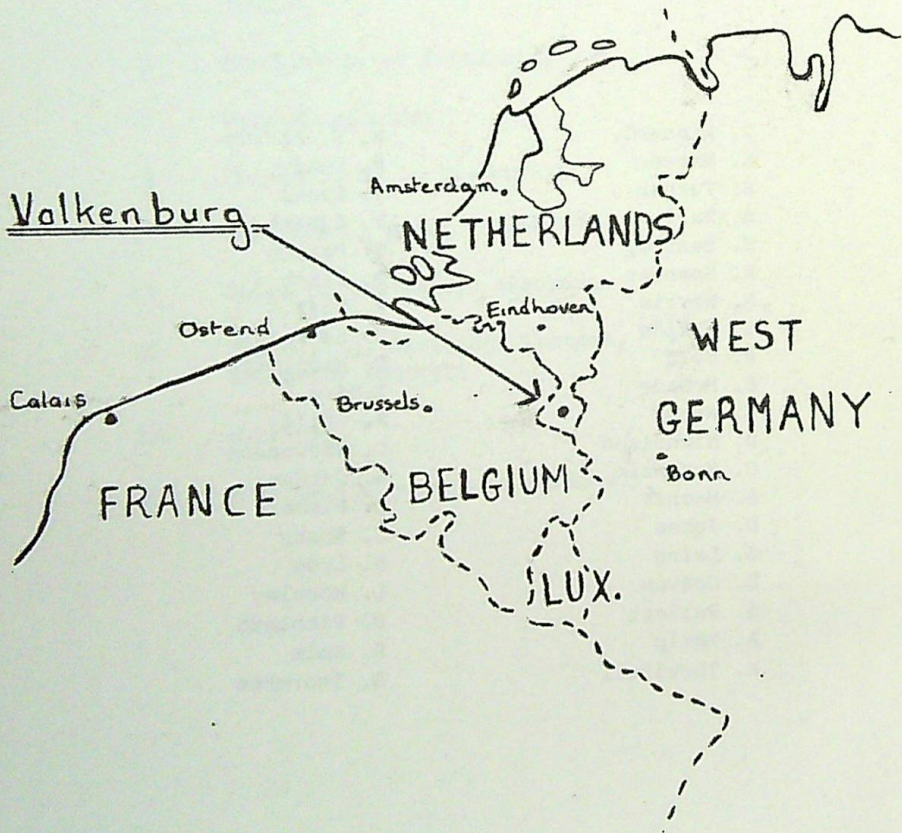
MEMBERS OF THE TOUR PARTY

STAFF:

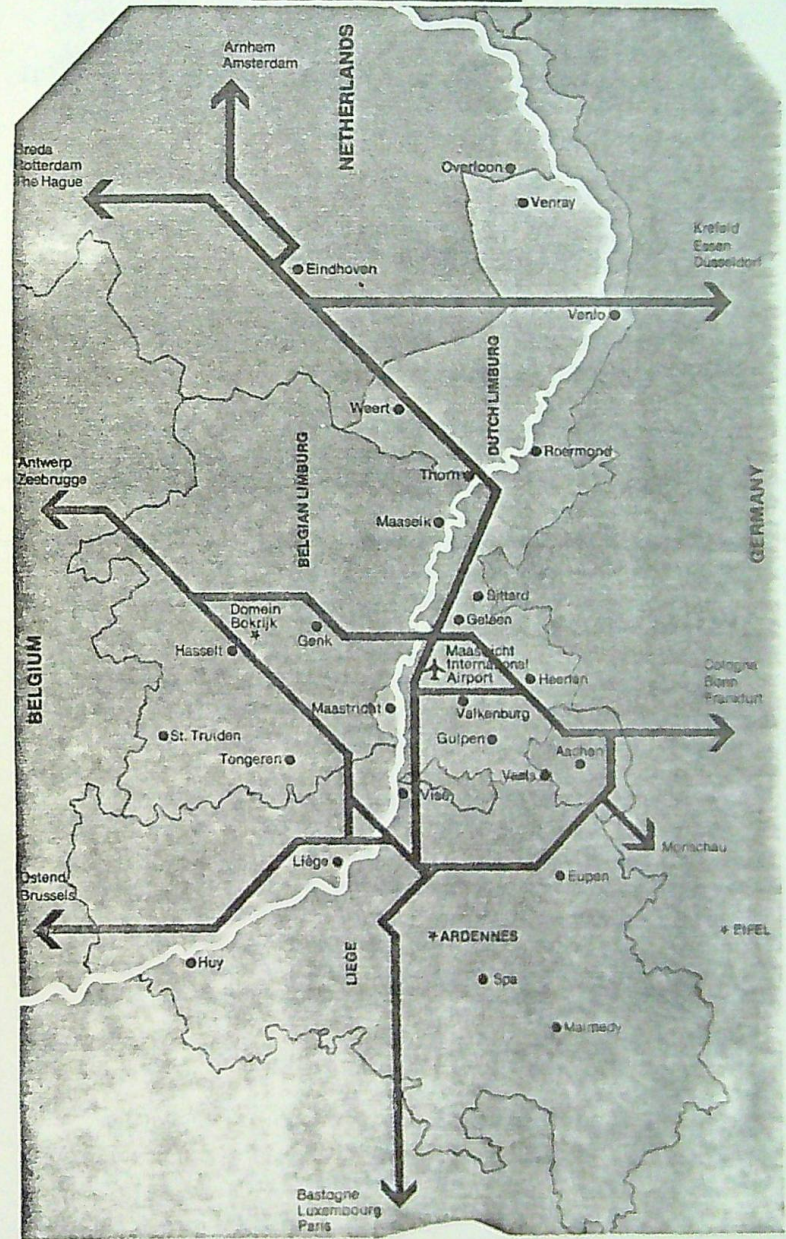
Mr. M. A. Barrow
Mr. P. A. Banks
Mr. D. Childs
Mr. W. Johnston
Mr. A. R. McDonald

| | |
|--------------|--------------|
| C. Winnard | M. S. Morris |
| S. Mather | P. Deady |
| S. Turner | J. Banks |
| S. Ball | T. Eubank |
| S. Bentley | G. Pawson |
| K. Spencer | D. Finch |
| S. Morris | R. Burt |
| G. Atkins | C. Kavanagh |
| R. Gold | D. Wadsworth |
| S. McDade | I. Ward |
| M. Wren | S. Childs |
| D. Nicholson | D. Stevenson |
| C. McKenzie | S. Gardner |
| A. Machin | T. Rimmer |
| D. Jones | C. Sharp |
| S. Laing | S. Lyon |
| D. Craven | L. Worsley |
| S. Pallett | D. Pitblado |
| A. Philp | R. Sale |
| M. Threlfall | D. Thornton |

Our journey to Valkenburg



Where is Valkenburg?



Limburg

Limburg, the southernmost of the eleven provinces which constitute the Netherlands, has a character quite of its own. It is a country rich in beautiful scenery and monuments of culture which testify to a fascinating and ancient history.

Limburg is famous for its old castles, about a hundred, its lovely old churches and ruins, its picturesque villages and hamlets.

Among the population you will find a gay and dashing atmosphere which makes rather a South-European impression.

Carnival, shooting contests, festivals of music and folk-dancing, but also religious processions and celebrations form an essential part of the living pattern of the Dutch southerner. Its international situation makes Limburg very popular as a holiday resort. Within a radius of 70 miles the art cities of Antwerp, Brussels, Louvain and Liege, "La ville ardente", are within easy reach, as well as the ancient imperial city of Aachen and the German Rhineland with towns such as Cologne, Dusseldorf and Bonn. The Belgian Ardennes and the German Eifel mountains are at a stone's throw.

The north of Limburg is an area where quietness and space can still be found. The town of Venlo forms the centre of the North of Limburg, a historical centre lying between the river Meuse and the German border. In Venlo you will find many shops, trade and interesting historical and monumental sight-seeing spots; it is a town with character, busy and full of life, international

orientated and close to other foreign countries. The North of Limburg is favourite with families, who like to spend their holidays in modern equipped bungalow parks or camping sites in the midst of woods and moors.

In the middle, Limburg is at its widest. It's kept in balance in the west by the dynamic town of Weert and in the east by the town of Roermond, since the 12th century a stronghold of counts and dukes of Geire. In the centre of Middle Limburg you will find many watersport possibilities and Thorn, The White Village. It's a historical jewel in stone. An abbey was built here in 922. In 1170 it was changed into a temporal abbey. A visit to Thorn is a must. In this characteristic old white village you will imagine yourself back in the Middle Ages.

And in the South you will find in the hilly landscape cities like Maastricht, Heerlen, Sittard, with its famous international sports centre, "Limburg", Vaals and Valkenburg.

The history of Valkenburg

Though the origin of Valkenburg is unknown, we do know for certain that the Romans lived in Valkenburg and that they built houses made of marlstone, which they took from the grottoes or caves.

The recorded history of Valkenburg dates from 1040. The name then appears for the first time as 'Valkenborgh', in a charter from Emperor Henry VI. This charter probably resulted from the building of the castle - the only hilltop one in Holland - and the settling of serfs and tenants around the castle. The Land of Valkenburg formed an independent seigniorship from 1080 to 1795, the Lords of the Castle (the Gozewijns, Walrams etc.) exercised powers of government. From 1381 to 1661 the castle was subordinate to the Duke of Brabant, from 1662 to 1795 it was alternately held by the States of the United Province and by the King of Spain. The castle and fortress of Valkenburg were repeatedly destroyed and demolished, but rebuilt again and again. But in 1672 the already damaged castle was blown up; the remains are the present ruin. Valkenburg acquired town rights before 1452. The Municipality of Valkenburg-Houthem now has a population of more than 12,000.

Since 1940 this 'Greater Valkenburg' includes not only Valkenburg but also Houthem-St.Gerlach, which are both situated on the river Geul. Upstream, but on the other side of Valkenburg lies the picturesque village of Schin-op-Geul, which also forms part of the above municipality.

Valkenburg today

When someone mentions "Holland", immediately, - windmills, clogs and a low lying very flat country springs to mind; but there is another side to this small but very friendly country, namely "Limburg", this the most southern of the provinces where the countryside changes from the flat to the soft rolling of hills and beautiful valleys, especially to the south. In the heart of all this beauty lies "Valkenburg", with its 12,000 inhabitants, a charming little town, but large when it comes to hospitality, and by far, the most important tourist centre of the Netherlands.

Here one can choose from a large number of good qualified hotels and boarding houses at generally moderate prices. Its curiosities and attractions are numerous, ranging from - museums, castles, souvenir shops and various caves with literally miles of passage ways.

There is also a BOB RUN with a monorail and two runs of 210 mtrs. Getting up or down may also be made by chairlift and once at the top there is a breathtaking view of Valkenburg and its surroundings.

One of the most interesting attractions are the VALKENBURG CATACOMBS, dug out in the marlstone which are of the same colour and form as the Roman Catacombs.

In the COALMINE VALKENBURG, which is now the NATIONAL MINE MUSEUM, is a large collection of mining tools and material from the Mine Museum Foundation.

Things to do in Valkenburg?

THE CASTLE RUINS:

Like a memorial to days of old the ruins of the ancient castle rise high above Valkenburg, fragments of a proud stronghold, which for centuries scowled threateningly down at the surrounding countryside. Inside its walls the fortunes of many citizens and the fate of the lands between the Rhine and the Scheldt were decided. The castle has a stirring history. Many Lords of Valkenburg were doughty warriors and the castle with its thick enclosing walls was repeatedly devastated and rebuilt. In our days the various architectural styles can still clearly be seen, especially in the chapel. The secret passages to the grottoes, underground casemates and the remains of the old knight's hall and the women's quarters help you to read the history of this much fought-over castle. No wonder that there are countless legends and ghost stories in circulation about it!

MUNICIPAL GROTTTO:

This consists of an extensive underground system of passageways, not formed by nature, but hewn out of the soft marlstone entirely by human hands. The Romans in the past quarried here the materials with which they built their villas and defence works (Roman part). In the grotto there is a constant temperature of about 14°C (57°F). Remarkable natural phenomena are the underground lake and the water that drips with clockwork regularity through the roof. The grotto is completely bombproof and in times of war - the last time as recently as the Second World War - has served as a shelter for the population of Valkenburg. Visitors are conducted around it in groups, or by cave-train early and late in the season between 8.30 and 10.30 a.m.. Special rates are given for parties.

The TOWN CAVES of Valkenburg must be one of the highlights during a visit to Limburg. Here is an absolute fascinating world to be found, a world which dates back to the Roman Era some 2000 years ago, and visited by 130,000 people every year. Here for example are mural paintings and the remains used as a shelter by persecuted mankind. Let a guide lead you through this remarkable world which will certainly fascinate you too.

At the top of the famous Cauberg is one of the largest recreation parks "SPORCENTRE CAUBERG" to be found, which will give pleasure to both young and old alike.

Our most recent addition is the very up-to-date INTERNATIONAL CASINO, where in the proper attire, a flutter can be made, on one of the 16 Roulette and 6 Black Jack tables, it also houses a cercle privé and a restaurant.

FLUWELEN GROTTTO:

This takes its Dutch name from the name of its former owner, Fluqijn. This grotto also served as a shelter for refugees in troubled times. It formed a safe refuge for the residents of the castle of Valkenburg during the many sieges which this castle underwent in the course of the centuries. Via secret passages only discovered in 1937 they could reach this shelter.

CATACOMBS:

These are a faithful reproduction of the major parts of fourteen of the best known catacombs of Rome, brought together here within a small compass. They were laid out from 1901 to 1913 and under the guidance and supervision of a committee of experts. You can thus admire part of underground Rome in Valkenburg.

PANORAMA OF THE PRE-HISTORIC WORLD:

In one of the oldest grottoes of this region you can see the most recent place of interest, a fascinating panorama of the pre-historic world, painted on the marl walls. Total surface: 1500 square metres. Entrance at the Chair-Lift Station, Neerhem.

COAL MINE:

As a visit to a Limburg Coal Mine is no longer possible these days, a replica coal mine has been cut out of the marlstone with the help and under the supervision of the Dutch Mines. Also the machinery which is used for the coal digging has been put in operation. You can get here a good impression of everything connected with a modern mine. It is lighted throughout by electricity and a 15 minute coal mine film is also shown.

DE FRANSCHE MOLEN - (The French Mill)

In the French Mill dated 1657 you will regularly find art exhibitions of modern painters, sculptors and potters.

PHANTOM CAVERNS:

In these mysterious caverns pre-historic beings in fluorescent colours amusingly depict the development of man and beast. Electronic sounds complete the mysterious atmosphere. There is parking in Plenkerstraat

CAPE KENNEDY:

The Cape Kennedy Space Base is situated next door to the Phantom Caverns, here you can travel to the moon by rocket. You will hardly believe your eyes and ears! When you land you will see all kinds of objects connected with space travel, and you visit a fascinating moon scape, the only one of its kind in the world. The trip to the moon may be combined with a visit to the Phantom Caverns.

WILHELMINA TOWER:

From the foot of this tower on the top of the Heunsborg, which rises 86m (280 ft.) above the town, you have a fantastic view of Valkenburg. If you take the trouble to climb the 160 steps of the tower, from the platform, you will see a tremendous panorama of the hills of Limburg which is more than worth the effort. The walk up to the tower involves a stiff climb but for those wishing to reach the tower in an original and effortless manner, take the Cable-Railway. On your way back you will enjoy the magnificent panorama of Valkenburg in the valley of the Geul, surrounded by wooded hills.

AMUSEMENT HALL:

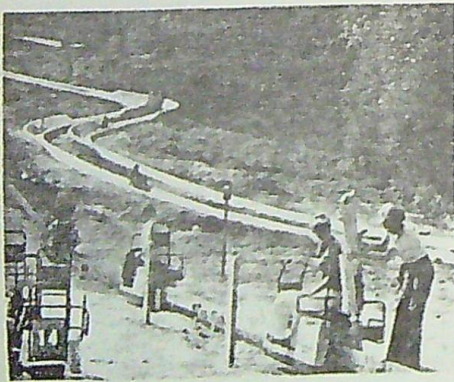
Near the Cable-railway to the Wilhelmina Tower you can try your luck and skill with modern machines. Admission is free.

ROTSPARK - and Polferbos:

This park and wood offer an excellent opportunity for strolling in beautiful and serene surroundings, and a large number of benches ensure that you can rest after a stiff climb and enjoy the wonderful panorama of the valley below. Entrance to the Park is at Plenkertstraat and on the Couberg and is free.

BOB-SLIDE AND MONORAIL:

These attractions being another feature of the Park are situated on one of the highest slopes in the Park. The Bob-slide takes you down over a distance of 220m., at the speed you choose and consists of two tracks which run next to each other. By electric Monorail you can return easily to the starting point. It is possible to take a single tour up or down.



REGIONAL MUSEUM:

The old town (t'Oud Schtadhoes) in the Groestraat contains the Regional Museum, which gives a picture of archaeological finds, historical objects and mementoes of a time when the land of Valkenburg played an important role. Moreover, exhibitions of paintings, sculptures, graphic art, etc. take place regularly in the old town hall.

MUSEUM OF CLOCKS:

In the villa 'Rozenheuvel' (Plenkerstraat 51) you can admire a unique collection of approximately 70 antique clocks of a.o. French and English origin. Besides clocks, some paintings, antique spears, swords, woodcarving and curious objects will draw your attention.

CASTLES AND PARKS:

Valkenburg, 'Den Halder' dates from the 14th century. It was originally a fortified corner-tower which, like the still extant ramparts and the Berkelpoort and Grendelpoort gateways formed part of the town's defences. It is now the office of the Provincial VVV of Limburg. 'Oost' dates from the 16th century; it was rebuilt in the 19th century.

Oud-Valkenburg. 'Schaloen' dating from the 15th century, was rebuilt in the 19th century (architect Dr. Cuypers).

'Genhoes' is from the 14th century (cellar, bridge and tower from 968) and was rebuilt in the 15th and 16th century. It now houses the William Halewijn Museum which contains a collection of life-size paintings representing mostly types from the Far and Near East. The collection was successfully exposed in Paris, London, Rome and Los Agneles. From the terrace (tea-garden) there is a beautiful view of the Oud Valley. Parking Place.

THE OPEN-AIR THEATRE:

In the Open-Air Theatre (with its 1,200 seats in the form of an amphitheatre) operas, operettas and plays are performed on summer evenings. If the weather is unfavourable, these are usually moved to the Stadsschouwburg. This is announced in good time on the posters and the VVV Office is also always informed.

HERMIT'S PARK:

This is near the former Hermitage on the Schaeberg and has a terrace from which unique views may be enjoyed. The Hermitage with its Chapel was built on the Schaesberg about 1688. Until 1928 twelve hermits successively spent most of their lives there. It is no longer occupied.

RESISTANCE MEMORIAL:

This was erected on the Cauberg in memory of the Limburg members of the Resistance Movement who fell in the Second World War. The carillon plays the Limburg or the Dutch Anthem at fixed times. The ten names given to the bells are those of the principal donor and the nine members of the Limburg Resistance.

LOURDES GROTTA:

At the foot of the Cauberg in 1896 a faithful copy was made in the marl wall of the famous grotto of Massabielle at Lourdes, where Bernadette Soubirous saw her vision of the Holy Virgin in 1858.

FAIRY-TALE WOOD:

Part of the 'Geboschke' is nowadays inhabited by well-known figures of the world of fairy tales. On your walk you will come across old acquaintances

such as Snow White and the Seven Dwarfs, Wolf and the Seven Goats, Tom Thumb and the Giant, Hansel and Gretel and the Bremen Town Musicians, while in a separate pavilion the Arabian Night's Tales and many others come to life. In the evenings the wood is entrancingly illuminated. In the adjoining rustic restaurant a unique organ will enchant you with its colourful interplay of light and water.

"DE WIEGARD" INDOOR SWIMMING POOL & SPORTING COMPLEX

(Oosterweg 7)

A modern 25 metre swimming-pool, baby pool and also instruction pool. Sporting Complex "De Wiegard" has a variety of halls where you can play Tennis, Handball, Football and also Bowling-alley. Halls can be rented upon request.

TRAMPOLINE CENTRES:

The Trampoline sport, which has become so popular in a short time, can be practised in Valkenburg. There are five trampolines near the Wilhelmina Tower.

TENNIS:

Three tennis courts near 'Castle Oost' (Oosterweg) give you a fine opportunity to play tennis. Further information available from the VVV Office.

MIDGET GOLF-LINKS:

A 'Midgenal Golfcourse' with 18 sportive holes, according to the modern international contest rules, is situated in the Plenkerstraat. There are also courses at the Swimming Pool Recreation Centre and the Wilhelmina Tower.

SWIMMING POOL RECREATION CENTRE 'DE VALKENIER'

This Recreation Centre has the following attractions:-

Swimming Pool:

A new round open-air swimming pool, 50 metre dia., where a modern purification plant ensures crystal-clear water. There are two diving boards, showers, a large sunbathing lawn and 70 changing cabins.

Boating Pond:

A large pond for waterbike and waterscooter sports, picturesquely situated, where young and old can amuse themselves. It is charmingly illuminated in the evening.

Miniature Golf Course:

With 19 ingenious holes. It is also illuminated in the evenings.

Playground and Paratower:

With many kinds of attractions and a large number of modern appliances on which the children can work off their energy in a safe way. A children's farmhouse and a monkey-house are also a favourite here.

Hall of Mirrors:

Where you can discover how you look to yourself, and to others.

Amusement Hall:

Where you can try your strength and your skill at shooting, playing ball, etc., with ingenious machines.

Chair-Lift:

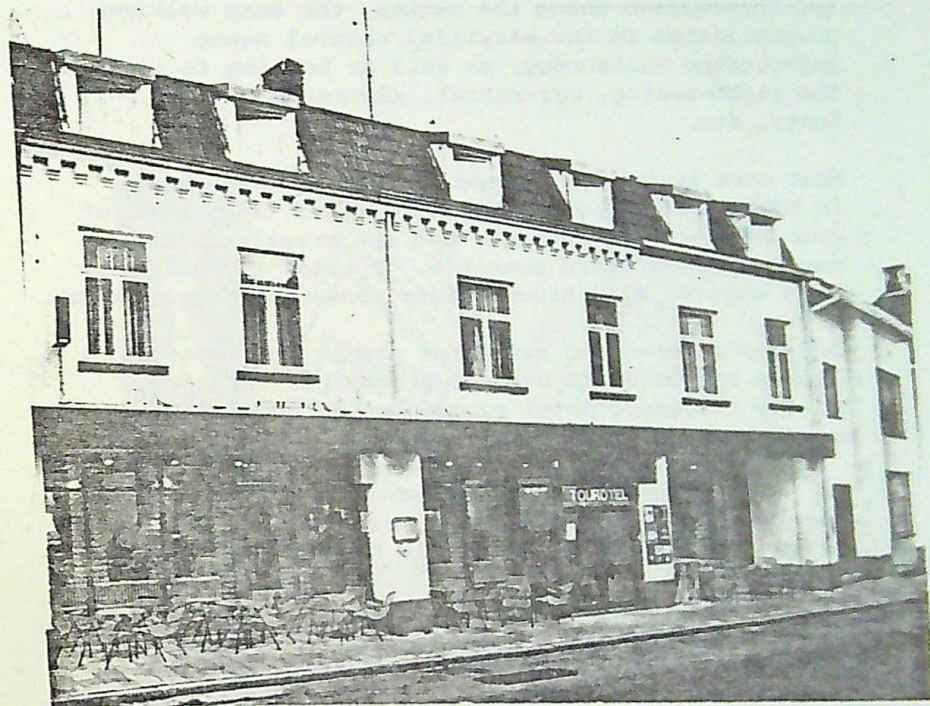
Above the entire recreation centre soars the chair-lift, from which seated in a comfortable chair, you can survey the happy crowd enjoying this unique centre.

Car-Scooter:

For young and old alike.

** Other features are the Giant Wheel, Ghost House, mini-car, Horse-run, Old Timer Track, Moon Rocket and the very latest attraction, Bull-riding. **

Hotel-Cafe-Restaurant "Tourotel"



Ideally situated in the centre of Valkenburg, at a 3 minutes walk from the railway station, with all the interesting sights, swimming pools, shopping-centre, casino and dancing just around the corner. Hotel-Cafe-Restaurant "Tourotel" was opened in 1977 and offers all modern comfort like new comfortably furnished rooms (many with bath or shower and toilet), a lounge and bar where you can enjoy our good drinks and meet friendly people in a relaxed atmosphere, a spacious restaurant, a fine sunny outside-terrace along the street, and a reception-information desk where you can

get information about the sights, the many walking possibilities in the beautiful natural scene surrounding Valkenburg, as well as booking facilities for sight-seeing, car-rental, admission tickets, boats, etc.

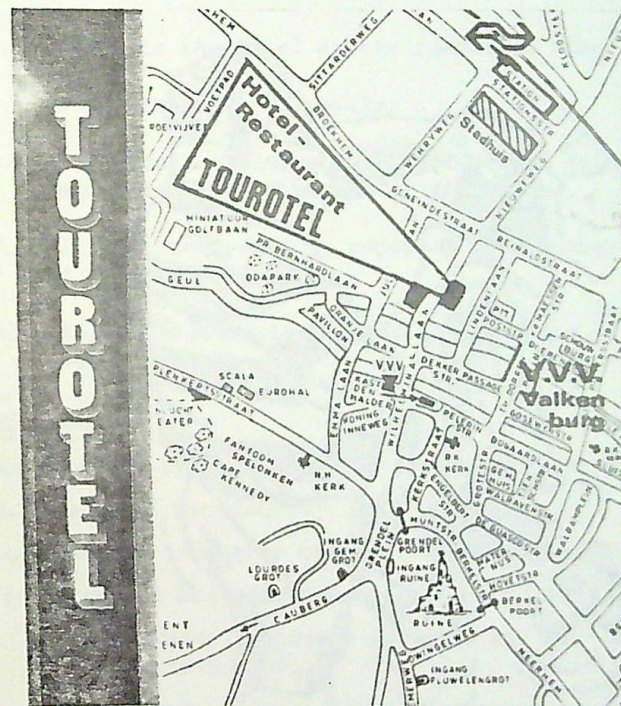
Most care is taken of preparing and serving meals in TOUROTEL. Our expert kitchen staff takes care of your special diet wishes. Bed and breakfast, half board and full board possible. Special rooms for our elder guests, also ground floor rooms and single rooms.

Children's rates and rates for groups on request (from a simple drink even to a complete arranged holiday including hotel accommodation and eventual organization of life, music, etc.)

The hotel management, the Janssen family, put their experience of years in optimum care for hotel guests, and is from now on also in their new hotel "TOUROTEL" always at your service.

May we welcome you as our guests in Hotel-Cafe-Restaurant "TOUROTEL" in order to take care of a pleasant stay in Valkenburg and the beautiful surrounding South Limburg, German Eifel and Belgian Ardennes.

TOUROTEL: Your friendly "home from home" in hospitable Valkenburg.



THIS MAY HAPPEN IF YOU INFRINGE THE RULES!



Rules of the party:

1. No smoking.
2. The drinking of alcohol is forbidden.
3. Listen and adhere to all instructions.
4. Return to the Hotel at the specified time.
5. Be punctual for all meals.
6. No person must leave the Hotel before gaining permission from a member of staff.
7. All accidents must be reported to a member of staff.
8. All breakages must be paid for by those responsible.

Insurance:

All members of the party are insured for the following:

1. Personal Accident.
2. Medical and other expenses - up to £20,000
3. Personal baggage and money - up to £300
 - (i) Baggage - maximum payment, any one article £150
 - (ii) Money - Limited to £100, including cash, cheques, travellers cheques, travel tickets.
4. Cancellation and curtailment - up to £250
5. Personal Liability - up to £500,000 each insured person.

Further details on request.

Travelling:

Our first meal will be dinner on Monday evening, so the children will require packed meals for breakfast and lunch. Tupperware containers and flasks should not be taken. As it is a long journey, any small games, cards and books you wish to take with you will be useful to pass the time. One medium sized suitcase and holdall is recommended.

Clothing:

Clothing for travel, although a matter of personal preference, should be of a reasonable standard of appearance, as well as comfortable. During the stay abroad, clothing of the pupils' choice may be worn, but on match afternoons, full school uniform must be worn.

Two sets of rugby/soccer kit, a track suit (optional), 3 towels and 2 large plastic bags for wet or dirty kit must be provided. Soap, toothpaste, shampoo and toothbrush must be taken as these are not provided in the Hotel.

Customs:

Duty free tobacco and alcohol apply only to persons aged 17 years and over. This applies to cigarettes, cigars, tobacco, wines and spirits, which you are not allowed to buy on the continent.

In case of emergency, the tour party can be contacted through:

1. N.S.T. Ltd., Bispham, Blackpool. Tel: 0253 52525
2. Turotel Group, 30-34 Wilhelminalaan,
6301 G J Valkenburg, Limburg, Netherlands.
Tel: 04406 13998 and 12039

Currency:

In the Netherlands, the unit of currency is the guilder, sometimes called a florin (Dfl) which is divided into 100 cents.

Coins come in denominations of one, five, ten, and twenty-five cents, plus one and two-and-half guilders.

Paper money is issued in denominations of two-and-half, five, ten, twenty-five, one hundred and one thousand guilders.

At the time of going to press the exchange rate is:

3.95 guilders = £1

Some useful words and phrases

| | |
|---------------------------|-----------------------------|
| Hello | = Dag |
| Good morning | = Gooi morgen |
| Please | = Alstublieft |
| Thank you | = Dank u wel |
| I am English | = Ik ben Engelse |
| I am lost | = Ik ben de weg kwijt |
| I am staying at the hotel | = Ik lojeer in hotel |
| A Coke please | = Een Coca-Cola alstublieft |
| A lemonade please | = Een 7-up alstublieft |
| An ice-cream please | = Een ijsje alstublieft |
| That's all thank you | = Dat is alles, dank u wel |
| How much is that? | = Hoeveel Kost dat? |

