



BALSHAW'S GRAMMAR SCHOOL  
LEYLAND, LANCs.

1782



## INDEX

	<i>Page</i>
Absence .....	11
Agreements .....	5
Aims .....	3
Buildings .....	3
Change of Address, etc. ....	13
Curriculum .....	5
Dress .....	11
Entrance .....	5
Fees .....	13
Games .....	5
Grounds .....	3
Health .....	11
History of School .....	3
Homework .....	7
Hours of Attendance .....	5
Houses .....	7
Medical Examination .....	7
Merit Lists .....	7
Old Students' Association .....	11
Remedial Exercises .....	7
Reports .....	7
Scholarships and Exhibitions .....	13
School Buses.....	13
School Magazine, Calendar, etc. ....	11
School Meals .....	13
Senior Mistress .....	13
Societies, Lectures, etc. ....	7
Wireless Lectures .....	7



1782

BALSHAW'S GRAMMAR SCHOOL  
LEYLAND, Lancs.

*Headmaster:*

V. U. OLDLAND, B.A. (LONDON).

*Second Master:*

R. A. BENNISON, ESQ., M.SC. (DURHAM).

*Senior Mistress:*

MISS M. A. RAHILL, B.A. (LIVERPOOL).

*Assistant Masters:*

A. J. BULL, M.A. (OXFORD).

[C. S. HILDITCH, B.A. (MANCHESTER).]

B. L. WILKINSON, M.A. (CAMBRIDGE).

W. J. DOWNER, M.A. (OXFORD).

T. SPEAKMAN, B.SC. (MANCHESTER).

J. BROWN, B.SC. (LEEDS).

D. S. MORGAN, B.A. (OXFORD).

R. H. LEITHEAD, B.A. (DURHAM).

E. T. BLAKEMAN, B.SC. (LONDON).

J. H. LEATHLEY, B.A. (LONDON).

H. HEWARTSON, M. Coll. H.

*Assistant Mistresses:*

MISS A. MILROY, B.A. (LIVERPOOL).

MISS K. WHEWELL, A.R.C.A. (LONDON).

MISS F. K. LEWIS, B.A. (LONDON).

MISS A. DOHERTY, B.A. (LIVERPOOL).

MISS M. HOLMES, University of London Diplomas in Domestic Subjects

MISS C. I. PROBERT, Diploma of Chelsea College of Physical Training.

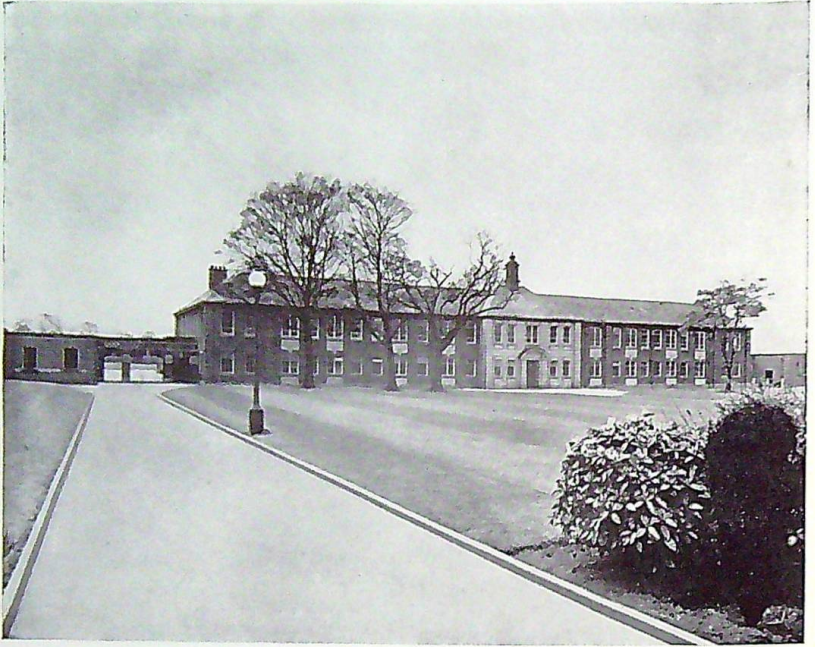
MISS E. A. MARKLAND, B.A. (LIVERPOOL).

MISS I. M. JOHNSON, B.A. (LONDON).

MISS E. M. BROMLEY, B.A. (LIVERPOOL).

MISS M. D. TWIST, B.A. (LONDON).

[ ]—*Seconded to Emergency Training College, Lancaster.*



THE SCHOOL  
FROM THE  
NORTH-EAST

## BALSHAW'S GRAMMAR SCHOOL, LEYLAND

---

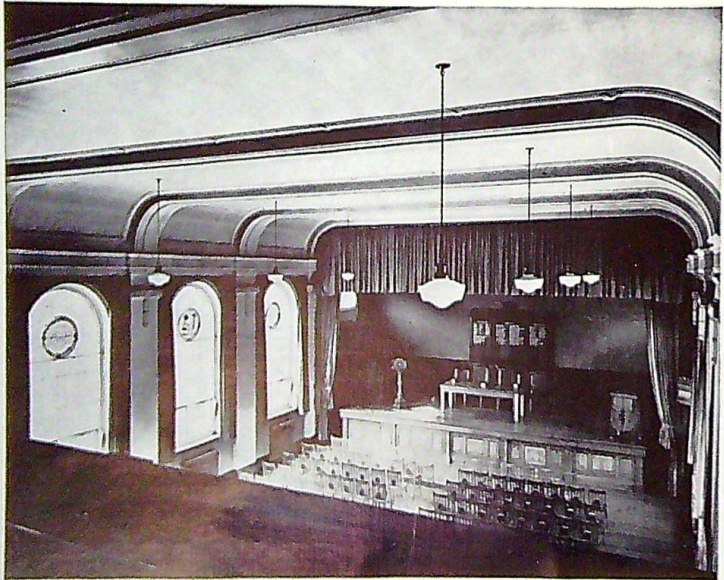
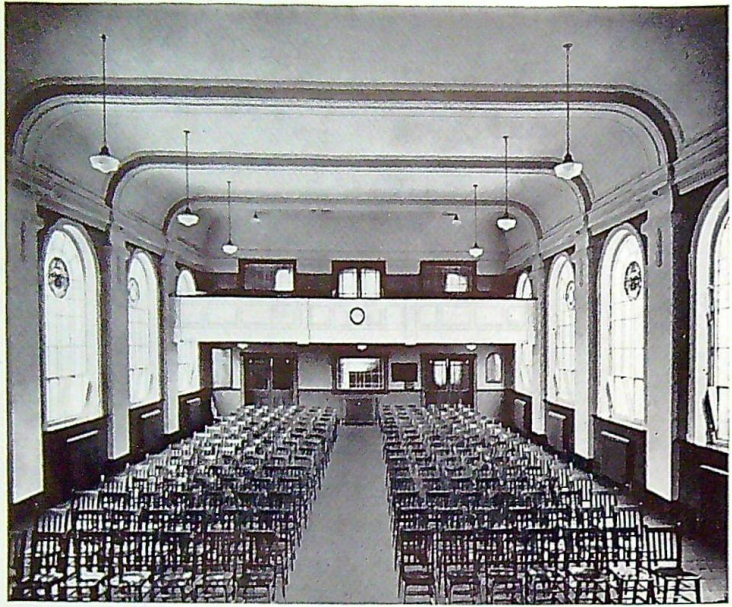
**HISTORY OF SCHOOL.** On the 14th of June, 1782, Richard Balshaw, a native of Leyland, devoted certain funds to the building and upkeep of a School and Schoolhouse in Leyland. In 1786 and 1790, he augmented the income by the addition of rents arising from several closes of land. Mr. Balshaw died in 1811, and in 1829 his widow conveyed by deed certain premises upon trust in the main for the education of girls. In order that the School might be included among the Secondary Schools of the County, a new scheme was sanctioned by the Board of Education and the Charity Commissioners in 1898, a considerable portion of the Trust Estate being sold and the proceeds applied to the erection of a new school room and class rooms.

**BUILDINGS.** The existing School was completed in 1931. Beautifully situated in their own grounds of some fifteen acres, the new buildings present an outstanding example of modern school architecture, equipment and lay-out.

Besides the ordinary classrooms and staffrooms there are four Science Laboratories, Geography Room, Art Room, Handicraft Room, Domestic Science Room, Greenhouse, Dining Room, Gymnasium, Library, Prefects' Room, Medical Officer's Room, Kitchens, Cloak Rooms, Changing Rooms containing foot-baths, shower baths, etc., the whole being centred around a dignified Assembly Hall capable of seating over 500 persons.

**GROUNDS.** The spacious playing-fields adjoining and surrounding the School buildings provide unusually good facilities for Rugby Football, Hockey, Cricket, Rounders, Tennis and Athletic sports.

**AIMS.** The aim of the School is to provide a good academic education to fit boys and girls to pursue professional commercial, or industrial careers, or to enter a University or Training College. At the same time every facility and encouragement is given to them to develop their individual gifts and propensities.



INTERIOR OF  
THE HALL

The School is examined during the Midsummer Terms under the authority of the Oxford Delegacy and the Northern Universities' Joint Matriculation Board. Pupils are expected to have obtained the School Certificate before promotion into the Sixth Form, where their studies are normally specialised.

**CURRICULUM.** The main subjects of the Curriculum up to School Certificate standard are Religious Instruction, English, History, Geography, Latin, French, Mathematics, General Science, Art, Singing, Handicraft, Cookery, Needlework, Physical Training, Elementary Physiology and Greek.

In the Sixth forms there are advanced courses in Classics, Modern Subjects and in Science and Mathematics. All pupils in the Sixth forms are expected to sit for the Higher School certificate two years after obtaining the School Certificate. In these forms, stress is laid upon breadth of outlook and in addition to their examination subjects, all pupils take courses in Economics, Industrial History, Appreciation of Music, Topical Subjects, Appreciation of Art, Geography, Physical Training and Religious Instruction.

**AGREEMENTS.** In order that pupils should benefit to the full from the advantages to be offered at the School, a parent of a successful applicant will be required to sign an agreement undertaking to keep his child at the School at least until the end of the term in which he (*or she*) becomes 16 years of age, or, in the case of entrants over 12 years of age, for a period of at least four years. A full term's notice of leaving is required.

**ENTRANCE.** Pupils are admitted from the age of 10 years, and may remain at School until they become 19 years of age.

**HOURS OF ATTENDANCE.** The hours of attendance are from 9.0 a.m. to 12.30 p.m., and 1.45 p.m. to 4.0 p.m. on Mondays to Fridays. Saturday is a whole holiday.

**GAMES.** Every pupil is expected to take part in School games unless certified by a medical man to be physically unfit to participate. Games take place after School each day and are so arranged that all boys and girls have an opportunity of taking part in at least two organised matches, or practices, a week. School matches normally take place on Saturdays.





*"Her eyes, her hair, her expression, her smile . . . . ."*

SCENES FROM SCHOOL  
DRAMATIC SOCIETY  
PRODUCTIONS  
1942  
"Miss Elizabeth Bennett."

**HOUSES.** The School is divided into four Houses: Clayton, Cuerden, Farington and Worden. Each House contains both boys and girls with a House Master and a House Mistress in charge. The House spirit is strong and is stimulated by several activities arranged independently by the Houses. In all the principal games there are both League and Knock-out Competitions, arranged on a House basis.

**SOCIETIES, LECTURES, ETC.** All pupils belong to a School Society of their own choice. The following School Societies meet regularly :— Scientific, French Circle, Topical Subjects, Debating, Junior Play Reading, Dancing, Needlework, Arts & Crafts, Gardening, Dramatic, Music, Geographical, Chess, Knitting, Gymnastic, Junior Classical, Junior Historical, Philatelic and Photographic. School plays and entertainments are enacted from time to time, and lectures, film displays, concerts and presentations of plays by professional companies are given generally in the Christmas and Easter Terms. In normal times the School also arranges visits to dramatic productions in other towns, camps, cruises and holidays abroad, etc., etc.

**MEDICAL EXAMINATION.** Every pupil is medically examined periodically by a doctor from the County Medical Department.

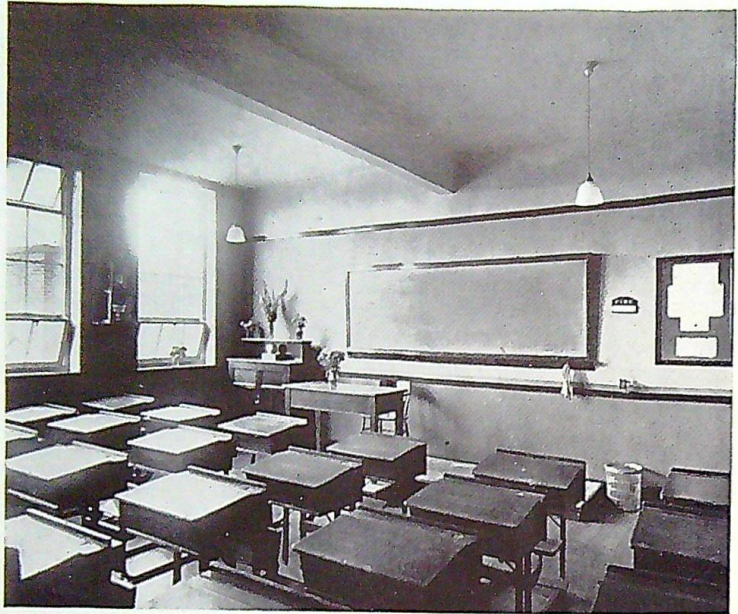
**WIRELESS LECTURES.** The School possesses a radio-gramophone and several series of broadcast lectures are received each week by forms in School hours.

**HOMEWORK.** Homework cards are supplied to parents of all pupils. These cards contain full details concerning the length of time allotted for homework for each form, the procedure to be adopted in cases of underworking, or overworking, at home, and other relevant points.

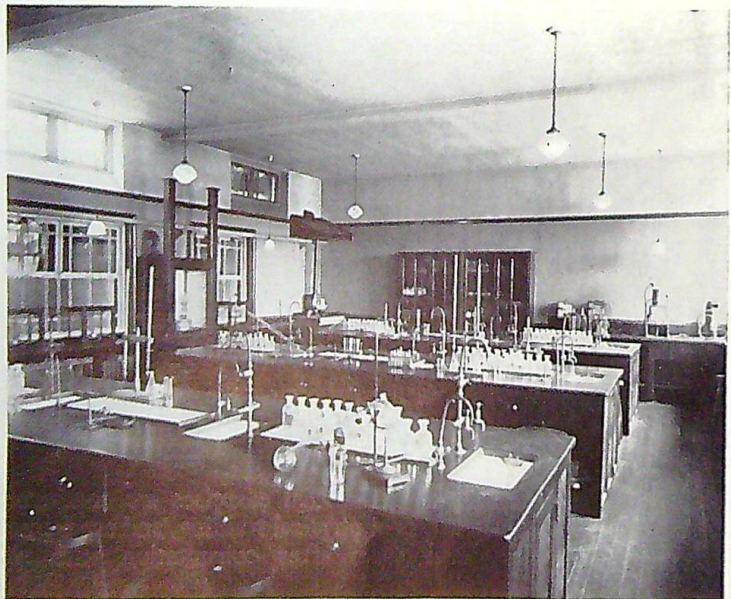
**REPORTS.** Reports are issued at the end of each term. These reports are designed to give parents as accurate an estimate as possible of their children's progress at School.

**MERIT LISTS.** Merit lists, showing the position of every pupil in the School in all subjects, are published and distributed to parents at the end of each term.

**REMEDIAL EXERCISES.** Remedial exercises are conducted by the experienced instructors of physical training, and are framed specifically for individual cases after consultation with the medical authority.



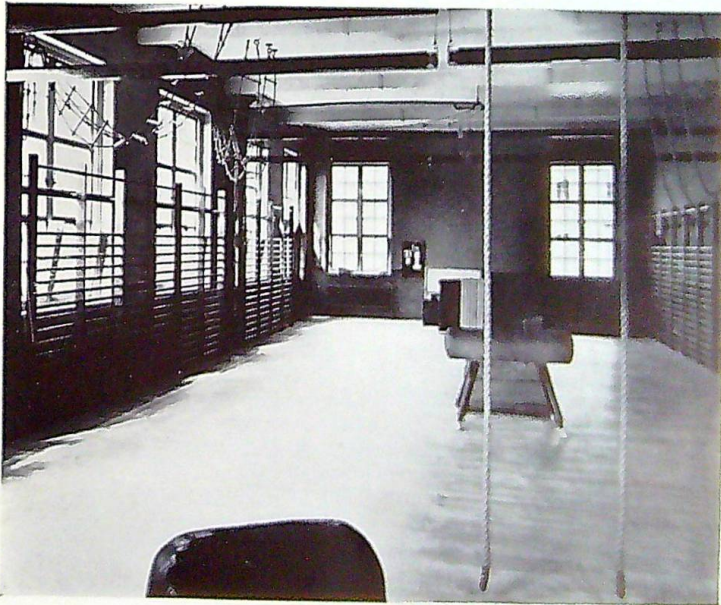
A TYPICAL CLASSROOM



THE CHEMICAL LABORATORY



WOODWORK AND METALWORK SHOP



THE GYMNASIUM



*"We've got some ripping fish for the Gov's dinner."*

SCENES FROM SCHOOL  
DRAMATIC SOCIETY  
PRODUCTIONS  
1943

*"The Admirable Crichton."*

**HEALTH.** A School health certificate, signed by the parent, or guardian, must be delivered on the first day of term by the pupil before he (*or* she) is admitted to the School.

**ABSENCE.** Except in cases of sickness, no pupil may be absent from School without having obtained the Headmaster's previous permission, which will be granted only in exceptional circumstances. When a pupil is absent through illness, a note signed by the parent, or guardian, and stating the nature of the illness and its probable duration should be sent immediately to the Headmaster. If the illness has been of an infectious nature, or if the pupil has been in touch with a case of an infectious nature, a medical certificate, signed by a doctor, and certifying freedom from infection must be sent to the Headmaster before the pupil can be allowed to return to School.

**DRESS.** Recognised articles of School dress for boys are (*a*) in winter, a dark suit (preferably grey tweed), School tie and School cap, and (*b*) in summer, a blue blazer with School badge, grey flannel trousers, School tie and School cap.

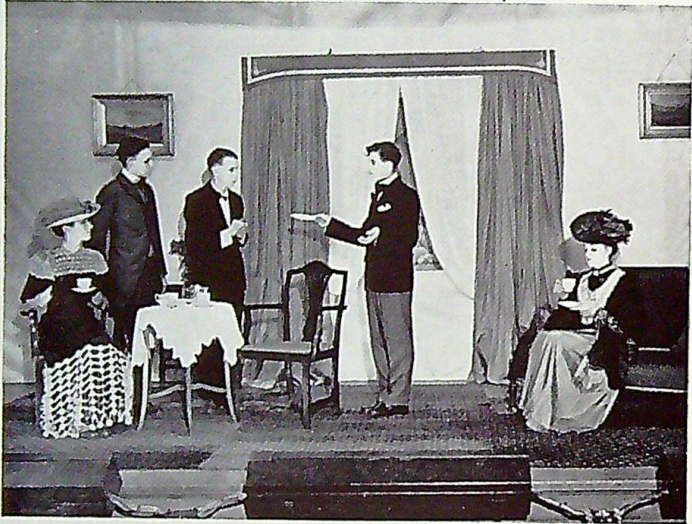
Recognised articles of School dress for girls are a dark blue gym tunic, white blouse (pattern obtainable at School), black shoes and stockings, School tie, black velour hat with School hatband and navy coat. In the summer term the School summer uniform may be worn by girls, at the option of the parent (*leaflet enclosed*). The hat should be of white panama straw with the School hatband. A blue blazer with School badge may also be worn. There is a special uniform for Prefects and Sub-Prefects.

Each pupil is also expected to possess the recognised outfits for gymnasium and for games. All possessions should be clearly marked with the owner's name and House.

Articles of uniform, distinctive to the School, are obtainable from Messrs. Buxton Bros., Chapel Brow, Leyland.

**SCHOOL MAGAZINE, CALENDAR, ETC.** Each pupil is expected to have a copy of the Bible, and to purchase a copy of each issue of the School Magazine and the School Calendar.

**OLD STUDENTS' ASSOCIATION.** There is a flourishing Old Students' Association, of which all pupils may become members upon leaving School.



*"Good heavens, Lane! Why are there no cucumber sandwiches?"*

SCENES FROM SCHOOL  
DRAMATIC SOCIETY  
PRODUCTIONS  
1944

*"The Importance of Being Earnest."*

**SCHOLARSHIPS**—Advanced Course Exhibitions and Bursaries are awarded by the Lancashire Education Committee and are available for pupils taking advanced work. Major Scholarships and Exhibitions, tenable at a University, are also available for competition each year.

**SCHOOL MEALS.** A School lunch (price 6d.) is provided in the Dining Room each day. It consists of meat or fish, two vegetables and pudding. Tea (price 3d.) is also available any day.

Pasteurised Milk may be obtained by pupils free of charge each morning at "Break."

**SCHOOL BUS.** Special School buses leave the Ribble Motor Bus Station, Tithebarn Street, Preston, at 8.20 a.m. daily and pick up pupils en route.

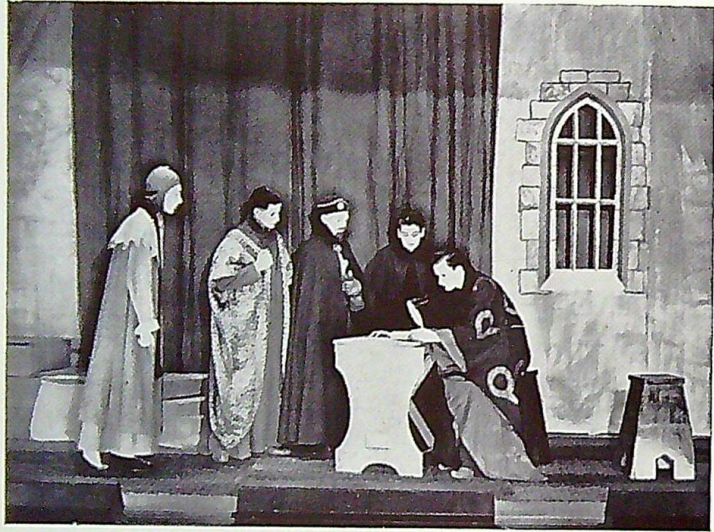
**FEES.** Under the Education Act, 1944, fees are abolished at the School.

**SENIOR MISTRESS.** The Headmaster wishes it to be understood that the Senior Mistress is free to interview Girls' Parents at the School during term-time on Fridays, from 4 to 5 p.m., or at other times by appointment.

**CHANGE OF ADDRESS, ETC.** Any change of address should be notified immediately to the Headmaster's Secretary.

For any further particulars, application should be made to the Headmaster.





*"It is not a generous document, is it, my lords?"*

SCENES FROM SCHOOL  
DRAMATIC SOCIETY  
PRODUCTIONS  
1945  
"Richard of Bordeaux."



*"And there I had the whole five of them and not a struggle left in the lot of them."*

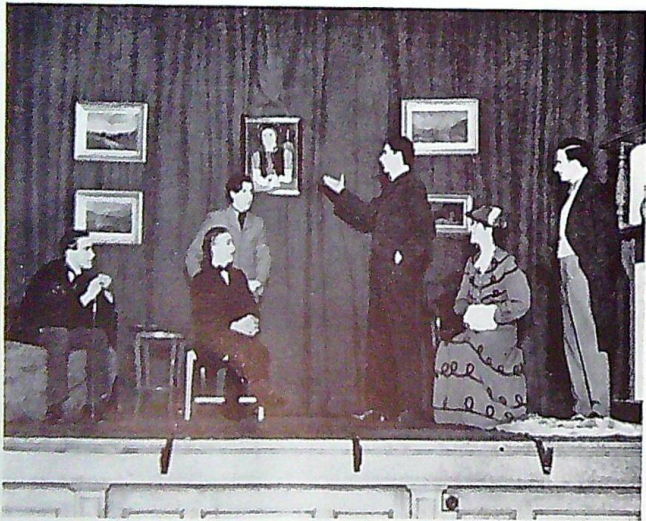
SCENES FROM SCHOOL  
DRAMATIC SOCIETY  
PRODUCTIONS  
1945

*"Richard of Bordeaux."*



*Margaret* : "Daughters are the thing." *Dearth* : "Daughters are the thing."  
 Dearth (P. Schofield). Margaret (B. Beal).

SCENES FROM SCHOOL  
 DRAMATIC SOCIETY  
 PRODUCTIONS  
 1946  
 "Dear Brutus."



*Carve* : "If any man wishes to be convinced that I am a great artist let him  
 look at my work."

SCENES FROM SCHOOL  
 DRAMATIC SOCIETY  
 PRODUCTIONS  
 1947  
 "The Great Adventure."

